

# ***PAPAKURA DISTRICT COUNCIL***

## **PAPAKURA DISTRICT PLAN**

OPERATIVE 16 JUNE 1999

**D P Hawkins, Mayor**

**T McLean, Chief Executive Officer**

Given under the Common Seal of the Papakura District Council this 16th day of June 1999

## EXPLANATORY STATEMENT

This statement does not form part of the Papakura District Plan but is included to assist users of the Plan to understand its format.

The Papakura District Plan has three sections.

**Section One – General** contains matters of district-wide significance and application.

**Section Two – Rural Papakura**, contains the objectives, policies and rules which apply specifically to the rural area of the District.

**Section Three – Urban Papakura** contains the objectives, policies and rules which apply to the urban area of the District and includes the Ardmore Aerodrome and the quarries in Hunua Road and Quarry Road, Drury.

When using the Plan it is necessary to be aware of the general provisions which apply throughout the District as well as the more specific provisions which apply to particular areas.

Previously the operative Papakura District Plan was available in three separate volumes (documents) each containing one Section of the Plan. In this reprint the three Sections of the Plan are all contained within the one volume. It is important when reading and interpreting the Plan that numerical references to other clauses of the Plan, refer to clauses within the same Section of the Plan, unless it is otherwise specified.

Previously the operative Papakura District Plan Maps and Flood Hazard Maps were separated according to Rural Areas and Urban Areas. In this reprint all the maps have been combined to form one comprehensive map set.

## CONTENTS AND ARRANGEMENT OF THE DISTRICT PLAN

*Preface*

*Areas of the District Plan*

## SECTION ONE – GENERAL

*Vision for Papakura*

- 1 Introduction
- 2 Resource Management Overview
- 3 Maori Perspective on the District Plan
- 4 The Environment and Resources of the District
- 5A Resource Management Strategy
- 5B Structure Plan Areas
- 6 Environmental Protection
- 7 Heritage Management
- 8 Monitoring and Review
- 9 Administration of the District Plan
- 10 Definitions

## SECTION TWO – RURAL PAPA KURA

- 1 Description of District
- 2 Background to the Rural Section
- 3 Significant Rural Resource Management Issues
- 4 The Rural Strategy
- 5 Alternative Subdivision Approaches
- 6 Objectives and Policies
- 7 Rules for Zones
- 8 Rules which apply throughout the Rural Area

## SECTION THREE – URBAN PAPA KURA

- 1 Structure and Contents
- 2 Protection of the Urban Environment
- 3 Heritage Protection and Management
- 4 Residential Zones
- 5 Commercial Zones
- 6 Industrial Zones
- 7 Special Purpose Activity Zones
- 8 Reserves and Community Services
- 9 Subdivision
- 10 Development Impact Fees
- 11 Network Utilities, Transport and Rooding
- 12 Applications, Monitoring and Designations
- 13 Landscape Design
- 14 Signs
- 15 Parking and Loading of Vehicles
- 16 Takanini Structure Plan Area
- 17 Hingaia Structure Plan Area

*This page intentionally blank*

PAPAKURA DISTRICT PLAN

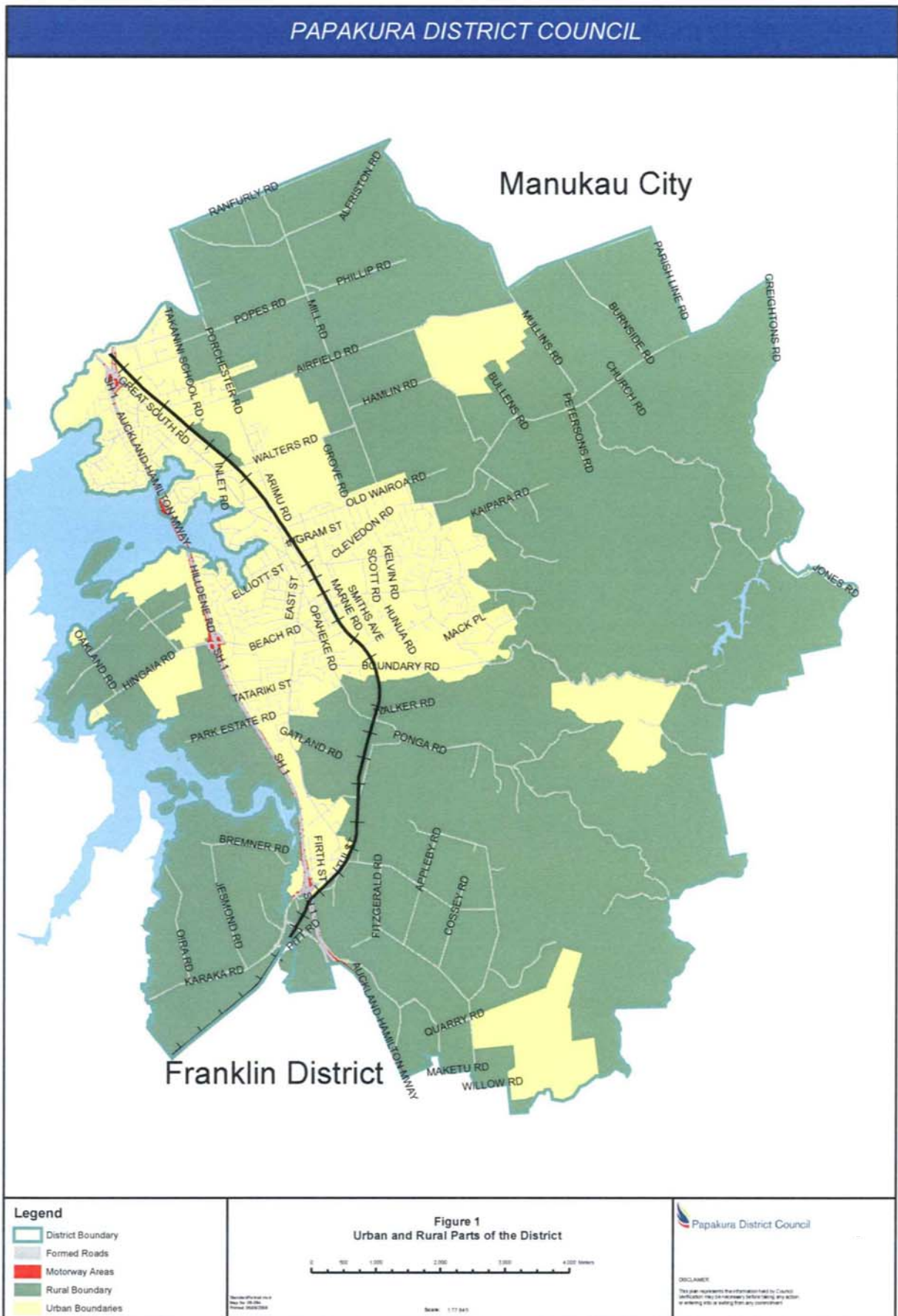
**PREFACE**

The Papakura District Plan is made up of three parts. In order to establish the context of the District Plan, a number of district-wide resource management matters are discussed in Section One of this document. Section Two, *Rural Papakura*, covers the rural parts of the District and Section Three, *Urban Papakura*, covers the urban parts of the District. The different areas are shown on Figure 1.

**Section One - General**, addresses the resource management issues of the District as a whole. Users of the District Plan are advised to refer to Section One before undertaking development of any land in the District.

**Section Two - Rural Papakura**, of the District Plan sets out the resource management provisions for the rural parts of the District. The localities covered include Takanini, Ardmore, the Hunua foothills, Drury, Karaka and Hingaia.

**Section Three - Urban Papakura**, The specific provisions of Section Three are directed solely at Urban Papakura and the localities covered include Central Papakura, Takanini, Conifer Grove, Drury and two areas of settlement at Bottletop Bay and Hingaia Bridge. Further, the two areas of quarrying activity and Ardmore Aerodrome fall within the scope of Section Three of the District Plan.



**CONTENTS OF SECTION ONE – GENERAL OF THE DISTRICT PLAN**

<b>Part</b>	<b>Page</b>
<b>SECTION ONE – GENERAL</b>	
<i>A Vision for Papakura</i>	
<b>1.0 INTRODUCTION .....</b>	<b>1/1–2</b>
1.1 Statutory and Community Basis .....	1/1
1.2 Background to the District Plan .....	1/1
1.3 Integrated Resource Management .....	1/2
<b>2.0 RESOURCE MANAGEMENT OVERVIEW.....</b>	<b>2/1–2</b>
2.1 Introduction.....	2/1
2.2 Integrated Resource Management .....	2/1
<b>3.0 MAORI PERSPECTIVE ON THE DISTRICT PLAN .....</b>	<b>3/1–2</b>
3.1 The People of Wharekawa .....	3/1
3.2 Specific Issues of Concern to Maori .....	3/1
3.3 Significant Areas.....	3/2
3.4 Waahi Tapu .....	3/2
<b>4.0 THE ENVIRONMENT AND RESOURCES OF THE DISTRICT .....</b>	<b>4/1–18</b>
4.1 Introduction .....	4/1
4.2 The Natural Environment of Papakura .....	4/1
4.3 The People of the District .....	4/2
4.4 The Built Environment .....	4/5
4.5 The Future .....	4/6
4.6 The Vision.....	4/8
4.7 Resource Management Issues .....	4/8
4.8 Resource Management Techniques.....	4/17
<b>5A RESOURCE MANAGEMENT STRATEGY.....</b>	<b>5/1–6</b>
5A.1 Strategy Outline.....	5/1
5A.2 The Rationale .....	5/2
5A.3 The Objectives.....	5/4
<b>5B STRUCTURE PLAN AREAS .....</b>	<b>5/7–32</b>
5B.1 Introduction .....	5/7
5B.2 Takanini Structure Plan Area.....	5/7
5B.3 Hingaia Structure Plan Area .....	5/18
<b>6.0 ENVIRONMENTAL PROTECTION.....</b>	<b>6/1–6-10</b>
6.1 Introduction .....	6/1
6.2 Overview .....	6/1
6.3 Coastal Environment .....	6/2
6.4 Water Quality and the Control of Earthworks .....	6/3
6.5 Natural Landforms and Vegetation .....	6/3
6.6 Ridgeline Protection.....	6/4
6.7 Auckland Regional Council.....	6/4

6.8	Natural Hazards.....	6/5
6.9	Resource Management Issues.....	6/6
6.10	Resource Management Strategy.....	6/6
6.11	Outcomes.....	6/7
6.12	Objectives and Policies.....	6/7
6.13	Explanation.....	6/9
<b>7.0</b>	<b>HERITAGE MANAGEMENT.....</b>	<b>7/1–4</b>
7.1	Introduction.....	7/1
7.2	Overview.....	7/1
7.3	Resource Management Issues.....	7/2
7.4	Resource Management Strategy.....	7/2
7.5	Outcomes.....	7/3
7.6	Objectives and Policies.....	7/3
7.7	Explanation.....	7/3
<b>8.0</b>	<b>MONITORING AND REVIEW.....</b>	<b>8/1–4</b>
8.1	Introduction.....	8/1
8.2	Overview.....	8/1
8.3	Resource Management Issues.....	8/2
8.4	Resource Management Strategy.....	8/2
8.5	Objectives and Policies.....	8/2
<b>9.0</b>	<b>ADMINISTRATION OF THE DISTRICT PLAN.....</b>	<b>9/1–6</b>
9.1	Introduction.....	9/1
9.2	Duty to Comply.....	9/2
9.3	Types of Consent.....	9/2
9.4	Rules.....	9/3
9.5	Information to Accompany Applications for Resource Consents.....	9/3
9.6	Assessment of Applications.....	9/3
9.7	Notification of Procedures.....	9/4
9.8	Hearings/Decision by Council.....	9/4
9.9	Existing Use Rights.....	9/4
9.10	Designations.....	9/4
9.11	Heritage Orders.....	9/5
9.12	Roads.....	9/5
9.13	Changes to the District Plan.....	9/6
9.14	Charges.....	9/6
9.15	Association Plans/Rules.....	9/6
<b>10.0</b>	<b>DEFINITIONS.....</b>	<b>10/1–20</b>

## **TABLES**

Table 4.1	Papakura District Total Population 1976-1991.....	4/3
Table 4.2	Ethnicity by Area.....	4/3

# **Papakura District Plan**

## *A Vision for Papakura*

The Papakura District Plan is founded on a vision. This vision, which has evolved from the community is:

*Papakura is seen as continuing to evolve as a coherent rural-urban district with high standards of amenity characterised by pastoral farming, horticulture and vigorous rural settlement centred on a strong and vibrant urban heart with its own cohesive base of residential, business and recreational development.*

Accordingly, the provisions of the District Plan have been formulated in order to realise this vision. With the support of the community it can be achieved.

*This page intentionally blank*