

Mill Road Corridor Study

Southern Section

What are we trying to achieve?

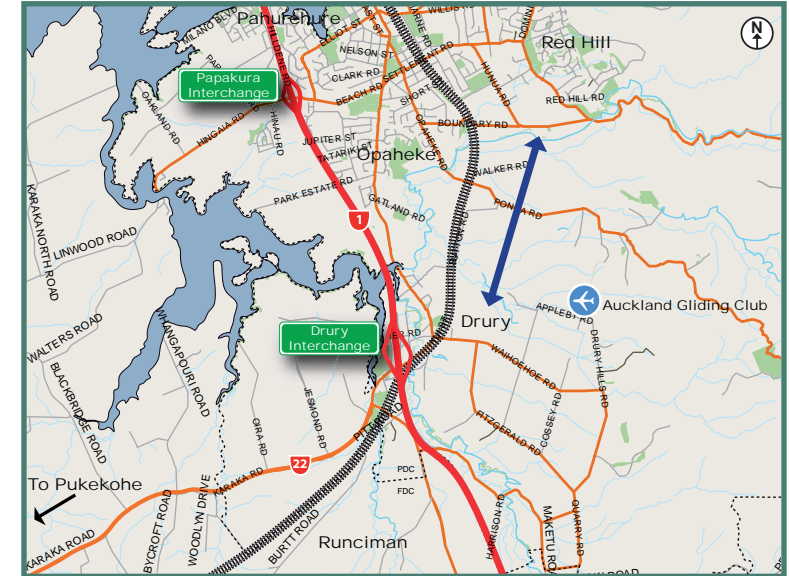
- Connection to SH22 and Pukekohe
- Connection to Drury South Business Project
- Long term reliability
- East west connections for equestrians, cyclists and pedestrians
- Reduce traffic on:
 - Great South Road
 - Drury Village
 - Settlement/Great South / Beach Road intersection
 - Marne Road / Town Centre.



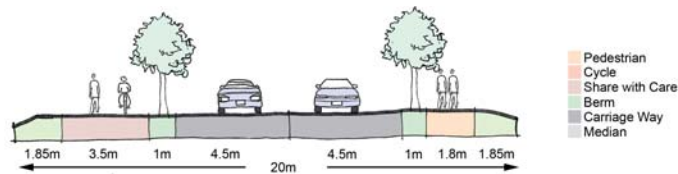
Entrance to Drury Village



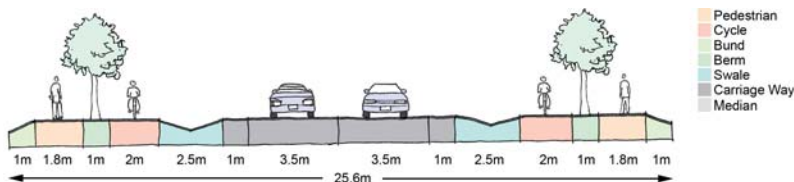
Rail over bridge Waihoehoe Road



Cross Sections



Option A (Shared pedestrian / cycling facility and kerb and channel)

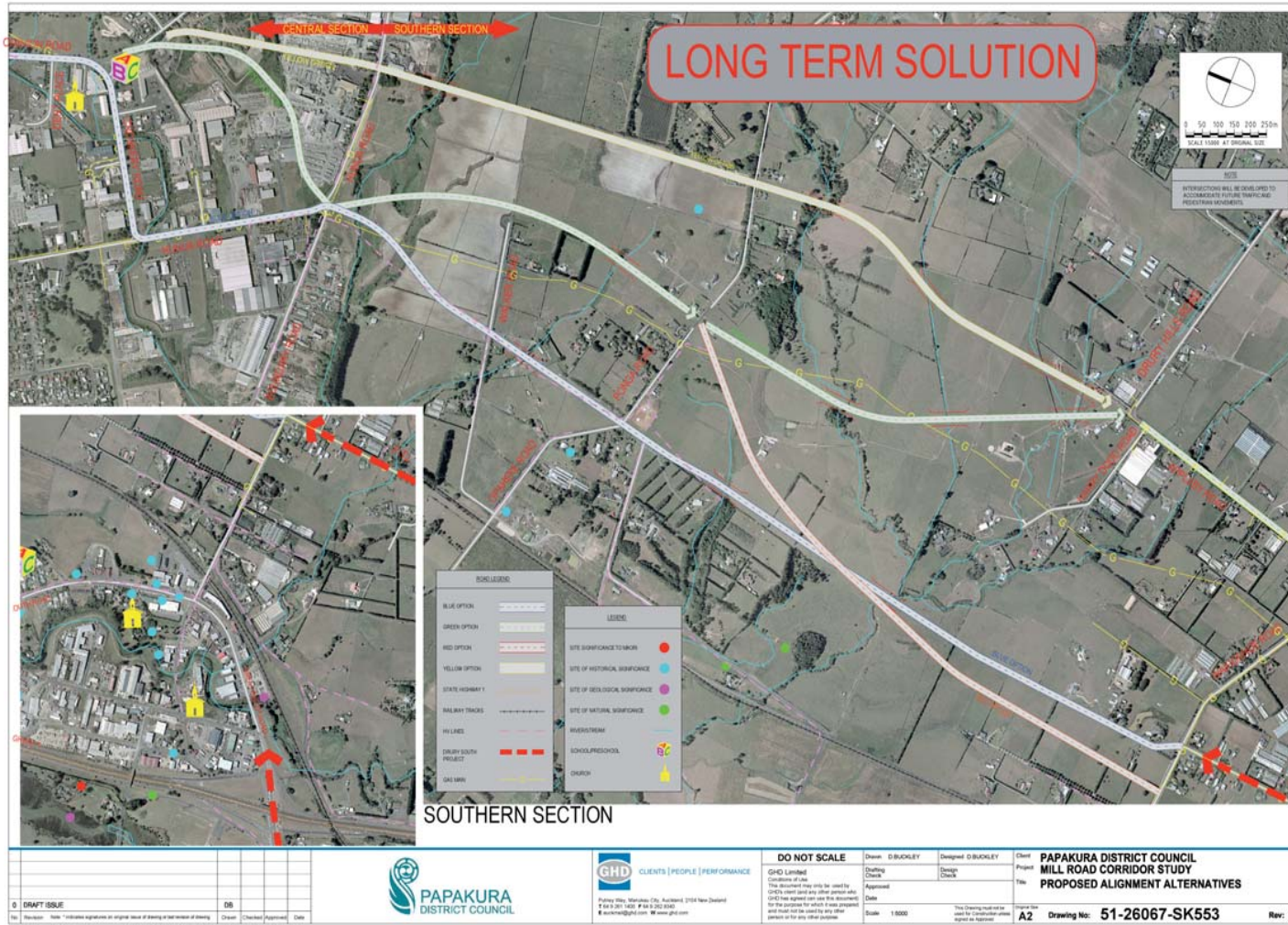


Option B (Segregated pedestrian / cycling facility and swales)

Concept

- Two traffic lanes
- Off-road cycle lanes / footpath
- No overtaking line
- 80kph speed limit
- Bridges over main streams
- Stormwater treated alongside road or in ponds
- Bridges over main streams incorporating walking, cycling and equestrian links.

Mill Road Corridor Study



0	DRAFT ISSUE	06	
1	Revised	10	
2	Final	11	
3	As Built	12	



DO NOT SCALE
GHD Limited
Conditions of use:
This document may only be used for the purposes for which it was prepared and may not be used for any other purpose without the prior written consent of GHD Limited.

This drawing must not be used for construction unless approved as indicated.

Plot Date: 18 November 2009 11:52:14 Call Fax Tel: 01 228 81544 0800 783 622 000 0800 783 622 000

